

Atlanta Refrigeration

MODEL: SK168-Combo

QUICK INFO

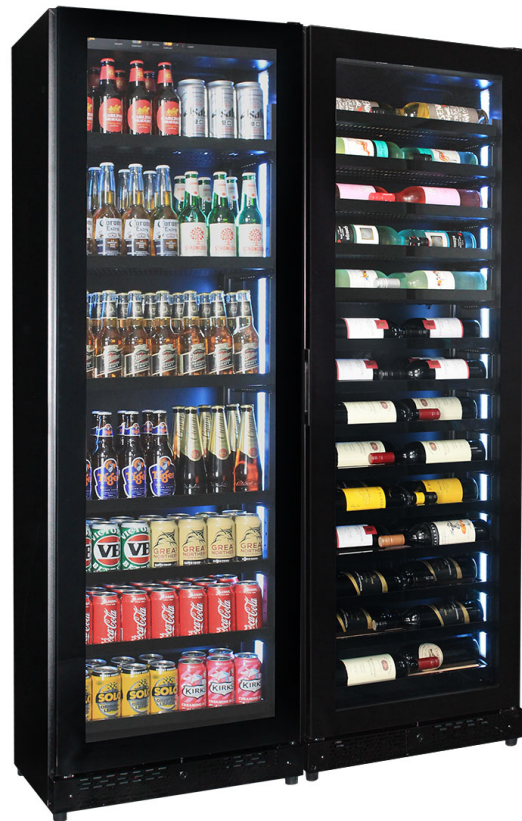
Classy upright quiet running beer and wine fridge combination designed especially with a shallow depth for areas where space is a premium. Unit is front venting and designed to be free-standing OR built into a cavity; it comes with special brackets to attach to the wall for stability. Both beer and wine zones are 1-18°C.

It has the highest quality inverter-driven EMBRACO brand compressor that is excellent for low energy usage when cooling and the 'dimable' 5 x LED light colour choices of white, red, orange, blue or green make a great feature.

** Remember brackets come with unit to secure to wall - being so shallow it has a small chance to tiple if empty and opening door **

PARTS AND ENERGY INFO

- 12Volt Fans
- Comes Left Hinged (But Is Reversible)
- Cyclopentane foaming
- Energy saving inverter compressor
- LED lighting
- LOW E glass
- R600 100% ozone safe gas
- Triple Glazing
- Embraco ECO Compressor runs 25% Cheaper



SPECIFICATIONS

Capacity (litres)	209
Holds (cans)	120
Noise Level	43
Consumption	2.60Kwh/24Hrs
Unit dimensions (WxDxH)	1200 x 395 x 1820
Lockable	Yes
Gross weight	188 kg

**Specifications and price of this product may change at any time

**For more information about this product please call us or visit our website.

SCHMICK 
Australia